

Auto-transformadores regulables Trifásicos

Auto-transformers regulating Three phase



Características Técnicas

Technical Specifications

Cobre tipo **HC-210°**

Copper type

Frecuencia **50-60**

Frequency

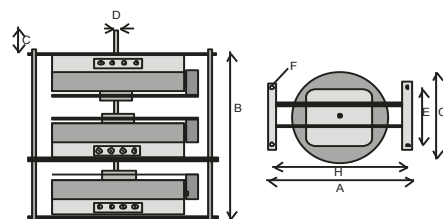
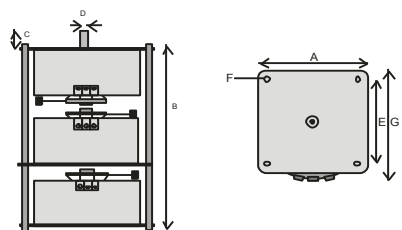
Tª ambiente máxima **45° C**

Max. Ambient temperature

Regulación manual / Manual regulation

MODELO	POTENCIA VA	PISTA SUPERIOR / UPPER CIRCUIT							PESO Kgrs
		A m/m	B m/m	C m/m	D m/m	E m/m	F m/m	G m/m	
VTMA-1000	1000	120	305	70	6	100	M-6	130	9,4
VTMA-1500	1500	120	315	70	6	100	M-6	130	10,4
VTMA-2250	2250	120	345	70	6	100	M-6	130	11,5
VTMA-3000	3000	120	375	70	6	100	M-6	130	13,5
VTMA-4500	4500	165	360	70	8	135	M-6	175	20,5
VTMA-6000	6000	165	390	70	8	135	M-6	175	23,5
VTMA-7500	7500	200	445	70	8	170	M-8	210	35
VTMA-9000	9000	235	475	70	8	195	M-8	242	45
VTMA-12000	12000	285	520	90	8	255	M-8	295	61

PISTA LATERAL / LATERAL CIRCUIT									
VTMA-15000	15000	320	520	90	10	255	M-8	380	64,5
VTMA-18000	18000	520	645	155	12	380	M-12	430	119
VTMA-21000	21000	540	645	155	12	380	M-12	445	126
VTMA-24000	24000	585	645	155	12	380	M-12	490	157



Regulación motorizada / Power regulation

MODELO	POTENCIA VA	PISTA SUPERIOR / UPPER CIRCUIT							PESO Kgrs
		A m/m	B m/m	C m/m	D m/m	E m/m	F m/m	G m/m	
VTMT-1000	1000	155	375	100			M-6	130	11,7
VTMT-1500	1500	155	375	100			M-6	130	12,6
VTMT-2250	2250	155	405	100			M-6	130	13
VTMT-3000	3000	155	435	100			M-6	130	14,6
VTMT-4500	4500	165	430	135			M-6	175	21,2
VTMT-6000	6000	165	460	135			M-6	175	25
VTMT-7500	7500	200	525	170			M-8	210	37
VTMT-9000	9000	235	555	195			M-8	242	48,5
VTMT-12000	12000	285	600	255			M-8	295	63,7

PISTA LATERAL / LATERAL CIRCUIT									
VTMT-15000	15000	320	600	255			M-8	320	68
VTMT-18000	18000	520	760	380			M-12	430	125
VTMT-21000	21000	540	760	380			M-12	445	133
VTMT-24000	24000	585	760	380			M-12	490	160

