

Auto-transformadores regulables Monofásicos

Auto-transformers regulating single phase



Características Técnicas

Technical Specifications

Cobre tipo **HC-210^o**

Copper type

Frecuencia **50-60**

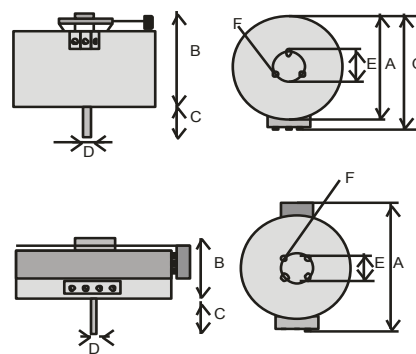
Frequency

Tª ambiente máxima **45º C**

Max. Ambient temperature

Regulación manual / Manual regulation

MODELO	POTENCIA VA	PISTA SUPERIOR / UPPER CIRCUIT							PESO Kgrs
		A m/m	B m/m	C m/m	D m/m	E m/m	F m/m	G m/m	
VMMA-160									
VMMA-220									
VMMA-350	350	110	75	30	6	26	M-4	125	2,5
VMMA-500	500	110	80	30	6	26	M-4	125	2,8
VMMA-750	750	120	90	30	6	33,5	M-6	130	3,2
VMMA-1000	1000	120	105	30	6	33,5	M-6	130	4
VMMA-1500	1500	160	95	35	8	40	M-6	172	5,7
VMMA-2000	2000	160	107	35	8	40	M-6	172	6,8
VMMA-3000	3000	226	120	40	8	60	M-6	238	13,4
VMMA-4000	4000	250	127	40	8	74	M-8	275	17
		PISTA LATERAL / LATERAL CIRCUIT							
VMMA-5000	5000	320	140	60	10	74	M-8		19
VMMA-6000	6000	425	170	100	12	80	M-10		32
VMMA-8000	8000	490	170	100	12	100	M-10		46
VMMA-10000	10000	570	175	100	15	150	M-12		71



Regulación motorizada / Power regulation

MODELO	POTENCIA VA	PISTA SUPERIOR / UPPER CIRCUIT							PESO Kgrs
		A m/m	B m/m	C m/m	D m/m	E m/m	F m/m	G m/m	
VMMA-160	160	90	211			75	M-5	92	1,8
VMMA-220	220	90	211			75	M-5	100	2,2
VMMA-350	350	155	185			100	M-6	130	4,4
VMMA-500	500	155	190			100	M-6	130	4,8
VMMA-750	750	155	200			100	M-6	130	5
VMMA-1000	1000	155	210			100	M-6	130	6
VMMA-1500	1500	165	205			135	M-6	175	8,6
VMMA-2000	2000	165	215			135	M-6	175	9,5
VMMA-3000	3000	235	245			195	M-8	242	18,5
VMMA-4000	4000	285	300			255	M-8	295	25
		PISTA LATERAL / LATERAL CIRCUIT							
VMMA-5000	5000	380	300			255	M-8	320	27
VMMA-6000	6000	520	350			380	M-12	430	48
VMMA-8000	8000	585	350			380	M-12	490	64
VMMA-10000	10000	665	360			420	M-12	570	91

